

Introduction

Combining with algorithm of advanced infrared temperature measurement and adaptive multi-sensor for cooperative environmental, intelligent doorbell TS1006 achieves infrared temperature measurement, data display of body temperature, voice alarm, etc. It can read body temp measurement with fast-speed, long-distance, accurate, wire-free. And it is applied to the temp measurement scene with less people and achieves single screening one by one.

TS1006



- Built-in non-contact infrared temp measurement module to ensure accurate temp measurement.
- Temperature measurement range is from 35 °C to 42 °C with accuracy ± 0.3 °C.
- Built-in rechargeable lithium-ion battery, wire-free and easy to install.
- Alarm when the temperature of the person being detected is abnormal.
- With excellent environmental adaptability, it can be automatically fine-tuned according to the field environment.
- Low power consumption to support continuous measurement for 15000 times, and stand by for 15 days.
- Compact and convenient to use
- Support wall and pole installation

Applications



Commercial building/
Community



Shop/ Restaurant



School



Bank

Specifications

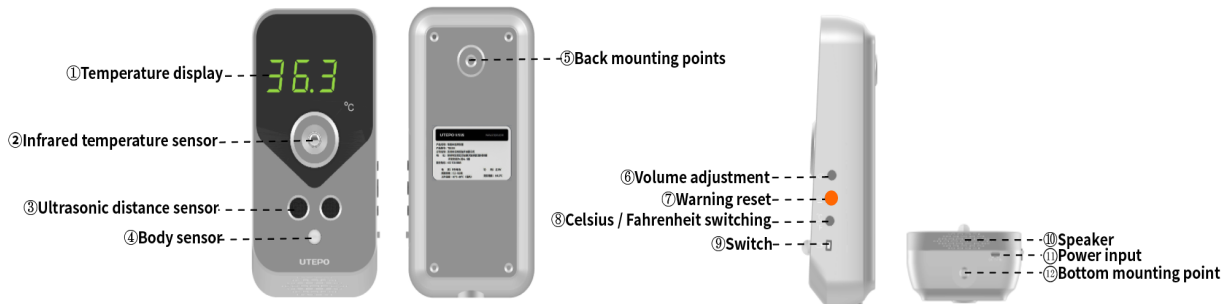
Item	Specification
CPU	ARM Cortex-m
Temperature Display	LED digital display
Sensor	Thermal image infrared temperature sensor
Temperature measurement	Rang: 35~42°C, accuracy: ± 0.3 °C
Detection distance	0.3m~0.6m
Respond time	1.5s~2s
Detection time	15000 times
Alarm method	Warning sound (60db)+ red beating temp indicator

Specifications

General specifications	
Capacity	5000mAH
Power consumption	<1W
Working temperature	10°C ~30°C (indoor)
Working humidity	0%-90% RH (Non-condensing)
Dimensions (L×W×H)	90mm×47mm×180mm
Weight	420g

* Specifications are subject to change without notice. Everything depends on the actual product

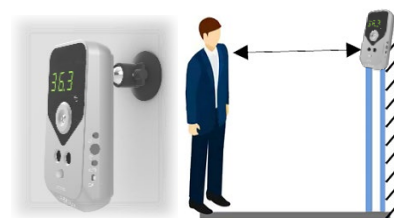
Descriptions



Installation

For wall

- 1、 Please fully charge the device and will start when turn on the power for about 10 seconds.
- 2、 To fix the device to wall through the back mounting point.
- 3、 To ensure the device screen in front of human face when it's installed above or to the side of the passage.
- 4、 The recommended angle to install is 0-15 degrees.
- 5、 To read body temp measurement correctly, the recommended distance between the device and collection point is 0.3 to 0.6 meters.



For pole

- 1、 Please fully charge the device and will start when turn on the power for about 10 seconds.
- 2、 To fix the device to pole through the bottom mounting point.
- 3、 Set up the device and pole directly in front of the passage with display facing the human face.
- 4、 The recommended installation height is 1.4 to 1.6 meters.
- 5、 To read body temp measurement correctly, the recommended distance between the device and collection point is 0.3 to 0.6 meters.



- Device should be installed indoors, make sure there is no wind between device and person.
- No direct sunlight to avoid incorrect temperature measurement caused by wind dissipation and direct sunlight.

Packing List

Item	Model	QTY	Note
Machine body	TS1006	1	
USB wire	/	1	1 meter, USB Type-A to USB Type-C charge wire
Bracket	/	1	
User manual	/	1	
Warranty Card	/	1	